



BOWMASTER
MOORING : ANCHORING : DEPLOYMENT : ACCESSORIES



Testing the anchor in the hull testing rig

Completed polished pocket, scratch plates and hull plate

Solution focused design

Client:
Echo Yachts

Project:
WRC 46m Catamaran

Weight:
430kg

Year:
2015

Material:
316L Stainless steel

Design
Hiding anchors and housing

Location:
Perth, Australia

The Challenge:

To devise an anchoring solution for a 46m catamaran.

For more than ten years a superyacht owner has used Manson Anchors for his anchoring tackle and so when he approached Australian-based Echo Yachts last year to build his new yacht, he knew what he was looking for in an anchor.

The design engineer from Echo supplied Bowmaster with sketch plans for an anchor on the bow of the 46m catamaran, but the brief didn't complement the finesse of the well-designed vessel or fit with the modern approach to anchoring.

The Solution:

A happy customer with a bespoke hiding anchoring system.

The Bowmaster team supplied several different designs and quotes based on the brief - which was for a Ray anchor on the bow. However the engineering team also took the opportunity to present six alternative bow roller designs whereby the anchor was housed neatly in the bow of the vessel.

All models were deemed too expensive by the yard and by iteration six the design was stripped back to the bare bones, looking for the most economic solution.

The pared back quotes and designs were presented to the owner and were all rejected. He actually wanted something more.

The yard returned to Bowmaster and through a collaborative working



BOWMASTER
MOORING : ANCHORING : DEPLOYMENT : ACCESSORIES



Samson Post (towing)



Rendering of vessel



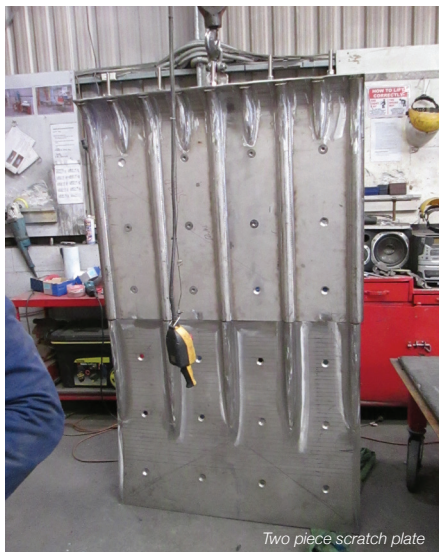
Towing roller

Through a collaborative working partnership a solution was found.

partnership, a revised system was presented to the owner.

A contract was signed to provide anchors, anchor pockets, scratch plates, towing bow rollers, hawse pipes, chain washes, samson posts and spurling pipes - more than the original budget - but more fitting of the vessel design.

Bowmaster is also working with Echo on a new 84m monohull.



Two piece scratch plate



430kg Stainless Steel Hiding Anchor